



FAMED LODZ S.A.

Excellence through experience,
for over 75 years.

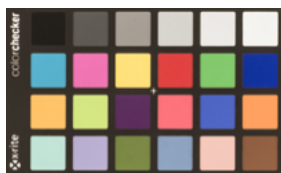
Examination ceiling-mounted lamp

Simple, practical and reliable **SOLIS 35C**

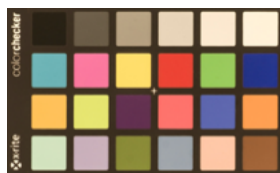
Whenever lighting is required during the clinical trial, Solis 35 guarantees optimum lighting conditions.

SOLIS 35C provides illumination of 40 000 lux at a distance of 100cm, ideal for all medical specialties. Thanks to high Color Rendering Index (CRI=96)

SOLIS 35C is recommended especially for dermatologist offices. Application of the LED provides a longer life of the light source, ease of use, lack of maintenance issues and also eliminates the heat of the lamp.



Colors at 4000 K



Colors at 3500 K

SOLIS 35C is made exclusively from heavy duty materials - steel, aluminum and ABS.

DESIGN

Round and flat shape of the lamp makes it practical and convenient to use and allows for a variety of applications. Smooth and rounded dome shape also facilitates cleaning and disinfection.

SHADOWS & FOCAL LENGTH

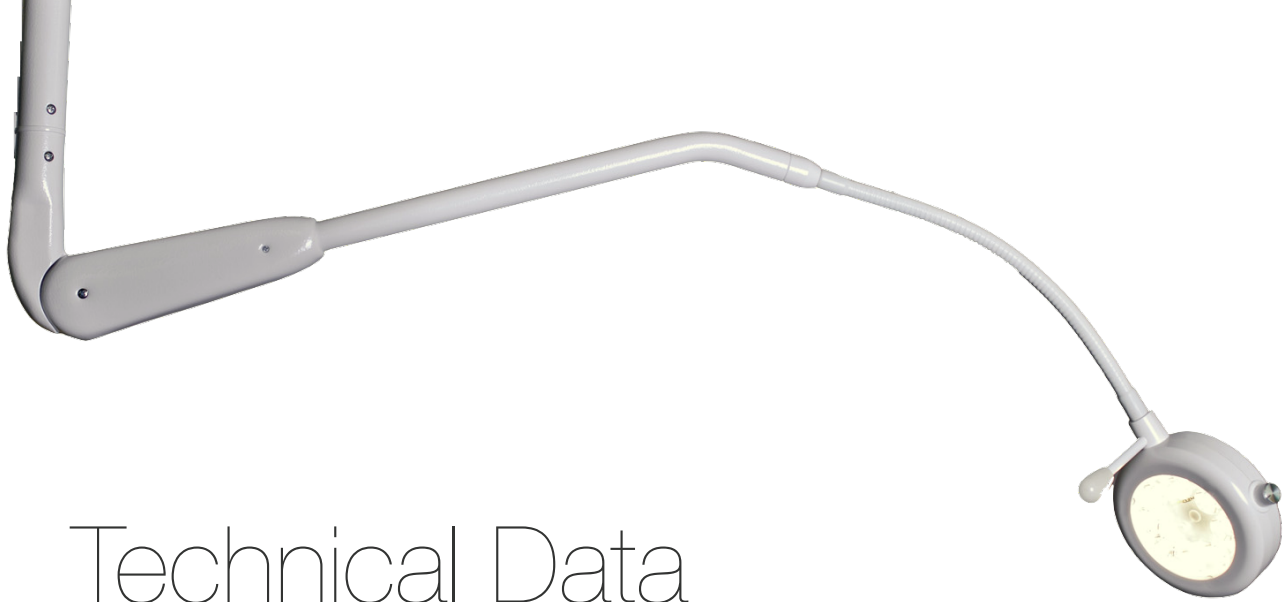
Radial arrangement of lenses and lamp diameter provide shadowless illumination, optimal focal length and three-dimensional light.

Flexible pipe design provides easy movements in all directions.

Ergonomic handle for easy adjustment of the lamp - easy to clean.

Smooth adjustment light intensity from 0 to 100%.





Technical Data

SOLIS 35C

Lamp type	SOLIS 35C
Adjustable intensity of light	0 - 100%
Control panel on light head	Yes
Color temperature	4 400 K
Color Rendering Index (CRI)	96
Iluminance at a distance of 1,0 m	40 000 lux
Average LED lifetime	> 50 000 h
Power consumption	20 W
Integrated low voltage transformer	Yes
Light head supply voltage	24 VDC
Power supply	100-240 VAC 50/60Hz
* optional 2 hour UPS in case of power failure available - separate device	



The product complies with the European Directive
MDR 2017/745,
 and following standards:
PN-EN 60601-1:2011
PN-EN 60601-2-41:2010



FABRYKA APARATURY ELEKTROMEDYCZNEJ
FAMED Łódź S.A.
 ul. Dostawcza 3D
 93-231 Łódź, POLAND



www.famed.pl



info@famed.pl



Jarosław **Majchrzak**
+48 784 012 501



j.majchrzak@famed.pl

Elena **Świątek**
+48 601 276 583

e.swiatek@famed.pl

Leszek **Kaniewski**
+48 662 066 064

l.kaniewski@famed.pl