



**FAMED LODZ S.A.**

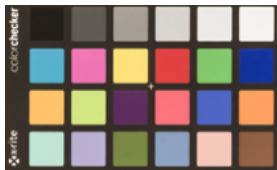
Excellence through experience,  
for over 75 years.

# Examination mobile lamp

## Simple, practical and reliable **SOLIS 30FA**

Whenever lighting is required during the clinical trial,  
Solis 30 guarantees optimum lighting conditions.

**SOLIS 30FA** provides illumination of 50 000 lux at a distance of 50cm, ideal for all medical specialties. Thanks to high Color Rendering Index (CRI=96) **SOLIS 30FA** is recommended especially for dermatologist offices. Application of the LED provides a longer life of the light source, ease of use, lack of maintenance issues and also eliminates the heat of the lamp.



Colors at 4000 K



Colors at 3500 K

**SOLIS 30FA** is made exclusively from heavy duty materials - steel, aluminum and ABS.

### DESIGN

Round and flat shape of the lamp makes it practical and convenient to use and allows for a variety of applications. Smooth and rounded dome shape also facilitates cleaning and disinfection.

### SHADOWS & FOCAL LENGHT

Radial arrangement of lenses and lamp diameter provide shadowless illumination, optimal focal length and three-dimensional light.

Flexible pipe design provides easy movements in all directions.

Ergonomic handle for easy adjustment of the lamp - easy to clean.

Smooth adjustment light intensity from 0 to 100%.



# Technical Data

## SOLIS 30FA



Lighthead	SOLIS 30
Supply voltage	24V DC
Light intensity at a distance of 1 m ( $E_c$ )	30 000 lx
Adjustable light intensity	15 ÷ 100%
Colour rendering index $R_a$	96
Colour temperature	4400 K
Operating field diameter $d_{10}$	200 mm
Light spot diameter $d_{50}$	100 mm
Adjustable diameter of the operating field	no
Temperature increase near surgeon's head	< 1°C
Depth of illumination $L_1+L_2$	100 cm
Power consumption for the lighthead	12 W
Insulation class	I
Protection degree provided by lighthead enclosure	IP 43
Working time on battery backup SOLIS 30FA	up to 7h
Life time of the light source	> 50.000 h

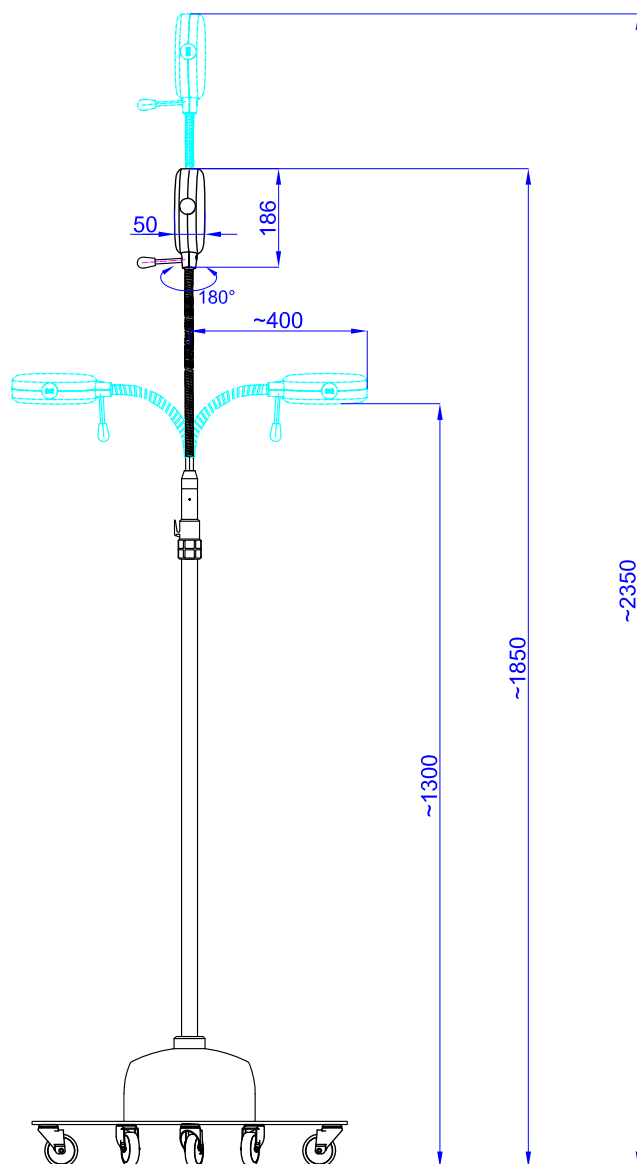


The product complies with the European Directive **MDD 93/42/EEC**,

and following standards:

**PN-EN 60601-1:2010**

**PN-EN 60601-1-2:2007**



FABRYKA APARATURY ELEKTROMEDYCZNEJ

**FAMED Łódź S.A.**

ul. Szparagowa 2, 91-211 Łódź

**Address for correspondence:**

ul. Ciasna 21 a

93-531 Łódź, POLAND



[www.famed.pl](http://www.famed.pl)



[info@famed.pl](mailto:info@famed.pl)



Jarosław **Majchrzak**

**+48 784 012 501**

[j.majchrzak@famed.pl](mailto:j.majchrzak@famed.pl)



Filip **Kozłowski**

**+48 601 276 583**

[f.kozlowski@famed.pl](mailto:f.kozlowski@famed.pl)

Leszek **Kaniewski**

**+48 662 066 064**

[l.kaniewski@famed.pl](mailto:l.kaniewski@famed.pl)